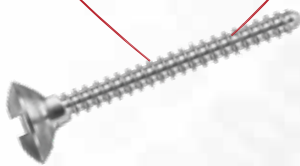


Bone-Fixation-Set and Pin-Set

www.ustomed.de



Implant-Steel
in \varnothing 1,0 mm



Innovations made by USTOMED



Competence in Instruments

Skilled and experienced surgical
mechanics create top-quality instruments

MADE BY HAND

Technical Competence
with a long Family Tradition

Using selected raw materials and highly advanced machinery

FOR USE BY HAND

Quality that you can see and feel

Many different instruments developed in close collaboration with
internationally renowned universities and opinion leaders



Member of the German Dental



Certified by DQS according to:

DIN EN ISO 13485
DIN EN ISO 9001



Competence in Instruments

01 USTOMED Bone-Fixation-Set

Ustomed Bone-Fixation-Set

For the fixation of bone grafts.

(developed by Dr. Jan Kielhorn, Öhringen/Germany,
in cooperation with USTOMED INSTRUMENTE, Tuttlingen/Germany)

This very compact and universally applicable set has been specially
designed to meet all the requirements of advanced implantology.



Bone-Fixation-Set



Box

- Sophisticated and functional storage box made of a novel, hardwearing plastic material invented in the aerospace sector
- Clearly structured design
- Removable ruler for exact measurement of screw length and augmentate
- For all established thermodesinfection and autoclaving procedures
- thus complying with the latest guidelines of the Robert Koch-Institute/Germany



Screwdriver

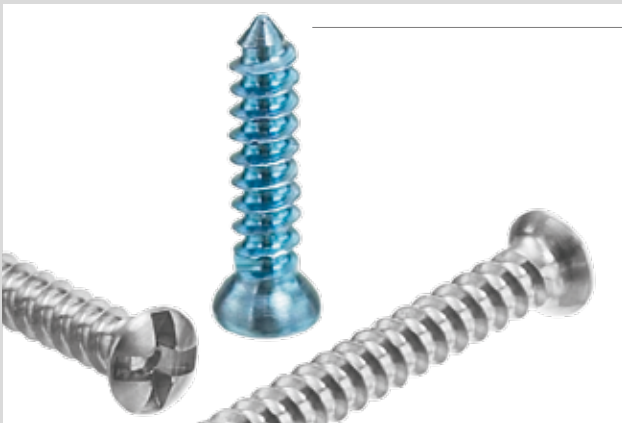
- Optimal handle length – perfect for any hand size
- Highly ergonomic handle prevents fatigue in the user's hand
- Easy and self-locating screw pick-up



Bone-Fixation-Set



Foto: Dr. Jan Kielhorn



Innovative Geometry of the Micro Screws

- Precision-milled, cross-recessed screw head
- Patented, self-adaptive screwdriver bit
- Fast and easy pick-up of the self-retaining screws
- Superior friction between the blade and the screw head – no socket rounding
- Significantly easier removal of tissue particles from the cross recess (compared with square socket)



Foto: Dr. Stephan Beuer, M.Sc.



Ø 1,0mm Implant-Steel



Bone-Fixation-Set

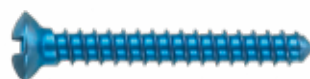
Titanium Micro Screws

- Diameters: 1,2 mm/1,4 mm/1,6 mm
- Lengths: 6 mm/8 mm/11 mm/13 mm

Ø 1,2 mm



Ø 1,4 mm



Ø 1,6 mm



highly enlarged illustrations

Micro Screws made from a new-type **Implant Steel Alloy**

- Diameters: 1,0 mm
- Lengths: 8 mm/11 mm/13 mm
- Ideal for very small bone fragments and 3D augmentation
- The special **implant steel alloy** prevents osseointegration, thus reducing the fracture risk during screw removal (compared with conventional titanium screws)

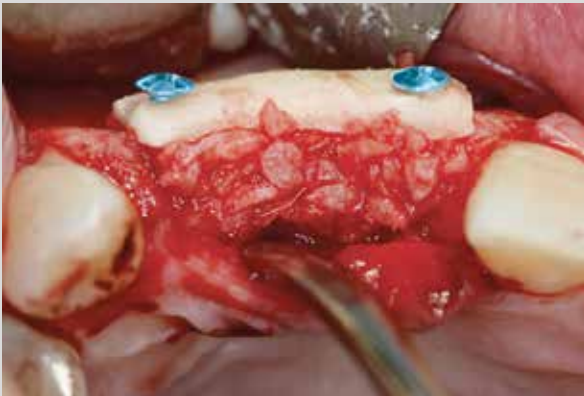
Ø 1,0 mm



highly enlarged illustrations

Example for application

The pictures are provided with kind permission of Dr. Stephan Beuer, M. Sc.
(Oral surgeon – Landshut/Germany)



Picture: Dr. Jan Kielhorn



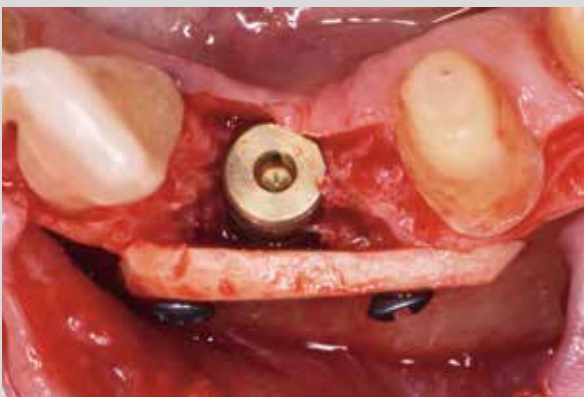
Picture: Dr. Stephan Beuer, M. Sc.



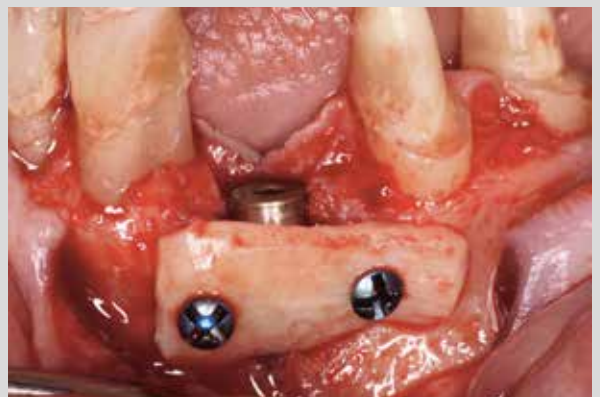
Picture: Dr. Jan Kielhorn



Picture: Dr. Stephan Beuer, M. Sc.



Picture: Dr. Stephan Beuer, M. Sc.



Picture: Dr. Stephan Beuer, M. Sc.

Bone-Fixation-Set

Order Form

| Order Number | Description | Quantity |
|-------------------|--|---------------------------------|
| 68-780-016 | Titan-Bone-Fixation-Set, consisting of: | [] |
| 68-720-002 | Box for Micro-Screws Ø 1,0mm – 1,6 mm | [] |
| 68-740-002 | Screwdriver, 11 cm | [] |
| 68-760-102 | Selfretaining Blade, cross, 60 mm, Ø 1,0 mm – 1,6 mm | [] |
| - | 1 x Package Titan-Screws of your choice | →→ please check on next page |
| - | 1 x Pilot Drill Ø 1,0 mm or Ø 1,2 mm or Ø 1,4 mm | →→ depending upon chosen screws |
| 68-780-010 | Implant-Steel-Bone-Fixation-Set, consisting of: | [] |
| 68-720-002 | Box for Micro-Screws Ø 1,0mm – 1,6 mm | [] |
| 68-740-002 | Screwdriver, 11 cm | [] |
| 68-760-102 | Selfretaining Blade, cross, 60 mm, Ø 1,0 mm – 1,6 mm | [] |
| - | 1 x Package Implant-Steel-Screws of your choice | →→ please check below |
| - | 1 x Pilot Drill Ø 0,8 mm | |
| | Implant Steel Alloy – Package of 10 pieces | |
| 68-110-008 S | Micro-Screws, Cross, Ø 1,0 mm, 8 mm, Implant Steel Alloy | [] |
| 68-110-011 S | Micro-Screws, Cross, Ø 1,0 mm, 11 mm, Implant Steel Alloy | [] |
| 68-110-013 S | Micro-Screws, Cross, Ø 1,0 mm, 13 mm, Implant Steel Alloy | [] |

Order Form

| Order Number | Description | Quantity |
|-------------------------------------|---|----------|
| Titan – Package of 10 pieces | | |
| 68-112-006 | Micro-Screws, Cross, Ø 1,2 mm, 6 mm | [] |
| 68-112-008 | Micro-Screws, Cross, Ø 1,2 mm, 8 mm | [] |
| 68-112-011 | Micro-Screws, Cross, Ø 1,2 mm, 11 mm | [] |
| 68-112-013 | Micro-Screws, Cross, Ø 1,2 mm, 13 mm | [] |
| 68-114-006 | Micro-Screws, Cross, Ø 1,4 mm, 6 mm | [] |
| 68-114-008 | Micro-Screws, Cross, Ø 1,4 mm, 8 mm | [] |
| 68-114-011 | Micro-Screws, Cross, Ø 1,4 mm, 11 mm | [] |
| 68-114-013 | Micro-Screws, Cross, Ø 1,4 mm, 13 mm | [] |
| 68-116-006 | Micro-Screws, Cross, Ø 1,6 mm, 6 mm | [] |
| 68-116-008 | Micro-Screws, Cross, Ø 1,6 mm, 8 mm | [] |
| 68-116-011 | Micro-Screws, Cross, Ø 1,6 mm, 11 mm | [] |
| 68-116-013 | Micro-Screws, Cross, Ø 1,6 mm, 13 mm | [] |
| Blades | | |
| 68-760-102 | Selfretaining Blade, cross, 60 mm, Ø 1,0 mm – 1,6 mm | [] |
| 68-760-106 | Selfretaining Blade, cross, 17 mm, Ø 1,0 mm – 1,6 mm, for contra angle handpiece | [] |
| Pilotdrill | | |
| 68-508-014 | Pilotdrill, Ø 0,8 mm, 14 mm, for Ø 1,0 mm Screws, with depth marking | [] |
| 68-510-014 | Pilotdrill, Ø 1,0 mm, 14 mm, for Ø 1,2 mm Screws, with depth marking | [] |
| 68-512-014 | Pilotdrill, Ø 1,2 mm, 14 mm, for Ø 1,4 mm Screws, with depth marking | [] |
| 68-514-014 | Pilotdrill, Ø 1,4 mm, 14 mm, for Ø 1,6 mm Screws, with depth marking | [] |
| 68-516-014 | Pilotdrill, Ø 1,6 mm, 14 mm, for Ø 1,6 mm Screws, with depth marking | [] |
| Accessories | | |
| 68-720-002 | Box for Micro-Screws Ø 1,0 mm – 1,6 mm | [] |
| 68-740-002 | Screwdriver, 11 cm | [] |
| 68-860-008 | Micro-Titanium-Plates, 0,6 mm, 8 holes | [] |

02

USTOMED Titan-Pin-Set



Titan-Pins

- Available in 3 mm length



Applicator

- One-piece Instrument for easy pin pick-up
- No torsion during the application
- Convenient handle ensures ergonomic and effortless working



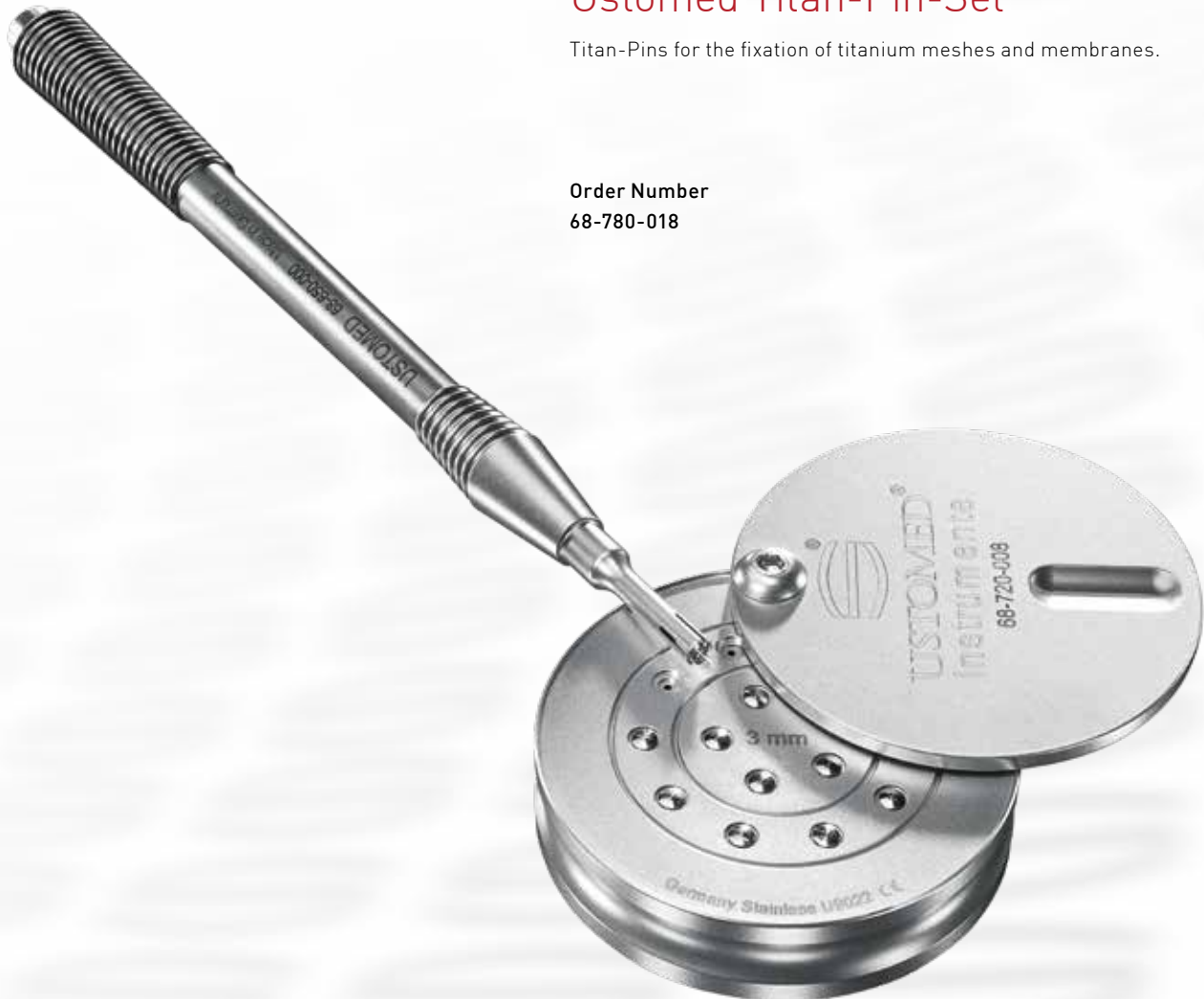
Box

- Functional design
- Easy to open due to one-hand operation
- Storage for 15 pins

Ustomed Titan-Pin-Set

Titan-Pins for the fixation of titanium meshes and membranes.

Order Number
68-780-018



Order Form

| Order Number | Description | Quantity |
|-------------------|---|----------|
| 68-780-018 | Titan-Pin-Set, consisting of: | [] |
| 68-720-008 | Box for Titan-Pins | |
| 68-650-000 | Titan-Pin-Applicator, 15,5 cm 1xPackage Titan-Pins | |
| | Titan-Pins – Package of 10 pieces | |
| 68-620-003 | Titan-Pins, 3 mm | [] |



USTOMED INSTRUMENTE
Ulrich Storz GmbH & Co. KG

Bischof-Sproll-Straße 2
78532 Tuttlingen / Germany

Hersteller von Chirurgie- und
Dentalinstrumenten

Phone: +49 (0) 74 61 / 9 65 85 0
Fax: +49 (0) 74 61 / 9 65 85 65

Manufacturer of Surgical and
Dental Instruments

info@ustomed.de
www.ustomed.de