

# simeda®



Customised  
prosthetic  
solutions

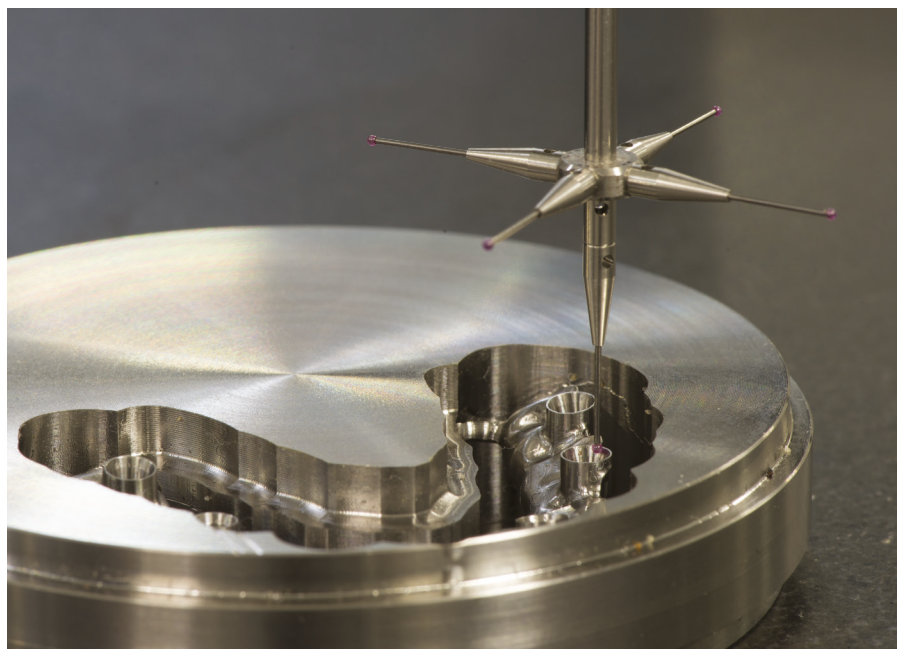


**Anthogyr**  
A Straumann Group Brand

## Anthogyr CAD-CAM solutions

Anthogyr produces customised prostheses adapted to all indications and workflows.

- A single partner
- A machining centre of excellence



### CAD-CAM made accessible to all

A **Simeda**® solution for any laboratory organisation:

- Preparation of prostheses from your STL files
- Design of prostheses from digitised or non-digitised models
- Digitisation of your models and design of your prostheses

**simeda**®


## Why choose Anthogyr CAD-CAM solutions?

Single **practitioner** - prosthetist dual partner

- High precision
- Innovation
- Expertise in CAD-CAM machining
- Premium materials
- Complete prosthetic range



### Simeda® an added value service offering

- Technical support: personalised assistance with expert dental technicians 
- Training
- Order online through Web Order
- **Serenity**®\* warranty programme

\*See the general warranty conditions for the Anthogyr Serenity® Programme.



## Simeda®

High precision and innovative CAD-CAM prosthetic solutions for all types of single or multiple restorations.

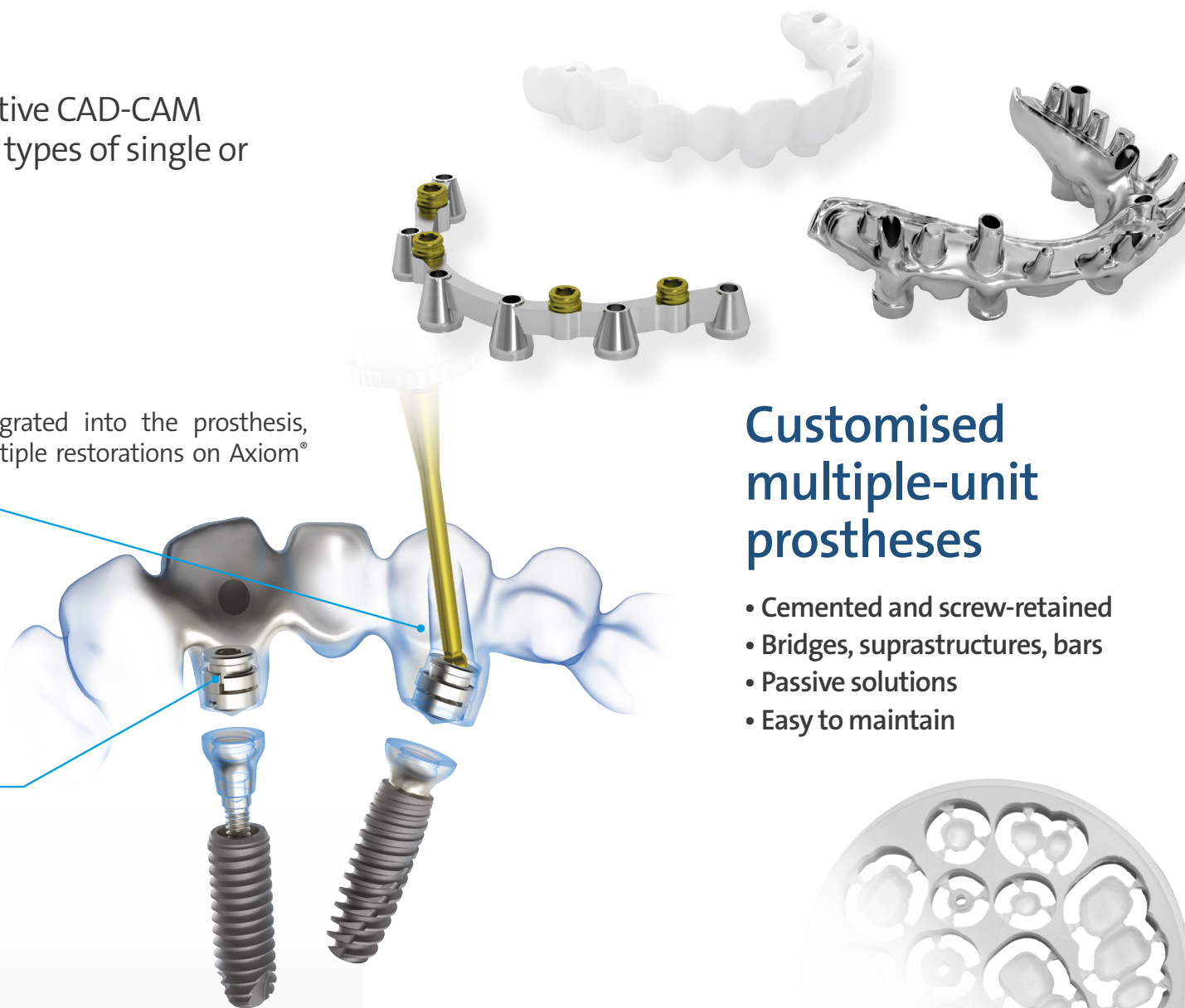
### INNOVATION

## inLink®

A unique lock system fully integrated into the prosthesis, specifically for screw-retained multiple restorations on Axiom® Multi Level®.

Angulated Access

Integrated inLink® lock system



**Angulated Access on Multi-Unit Axiom®BL & TL abutments and Connect+\* MPS platforms**

Angulated Access that threads screws through the screw channel.  
Angulations:  
10°, 15°, 20°, 25°.

\*Full list of compatible platforms available at [www.anthogyr.com](http://www.anthogyr.com)

## Customised multiple-unit prostheses

- Cemented and screw-retained
- Bridges, suprastructures, bars
- Passive solutions
- Easy to maintain

### Premium materials

Simeda®, specialising in ceramics, also offers a wide range of materials.

- Sina Z®, Sina T®, Sina ML zirconias
- Titanium and Cobalt-chromium
- VITA SUPRINITY® PC, VITA ENAMIC® and IPS e.max® CAD

## Customised single-unit prostheses

### INNOVATION

## AxiN®

The biological safety of a customised **screw-retained zirconia** for all Axiom® Multi Level® implant sectors.

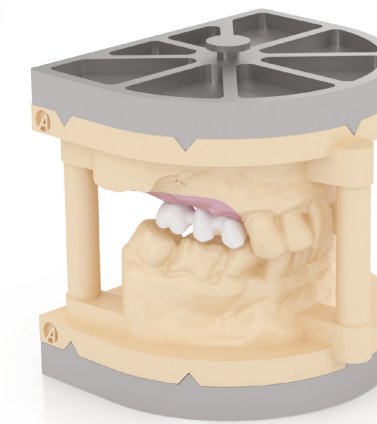
### Abutments and screw-retained teeth

Improved design of the crown for greater durability and better cosmetic support.



## DigitALL All inclusive

**A fully digital workflow** from an optical impression taken with an intra-oral scanner.



**High precision M.P.S (Multi-Platform Solutions) prosthetic solutions.**

**More than 250 implant platforms produced** by the Anthogyr CAD-CAM machining centre including some of the most popular ones on the market:

- Straumann®
  - Nobel Biocare®
  - Zimmer Biomet®
  - Dentsply Sirona®
- Full list available at [www.anthogyr.com](http://www.anthogyr.com)

## Solutions SCAN-CAD

- High performance MEDIT® Identica T500 & T300 scanners.
- Exocad® design software.



# Solutions Lab**side**



## Labside library

A library of CAD software to create your customised prostheses in the laboratory on the **Axiom® Multi Level®** platform.

- Axiom® Multi Level® scan-adapters  
- for laboratory scanners
- Axiom® Multi Level® digital transfers  
- for intraoral scanners
- Axiom® Multi Level® analogues  
- for impression models.

 dental wings

3shape 

exocad

C 184\_EN - 2019-12

Photo credits: Anthogyr, Getty images, Julien Cury  
All rights reserved, non-binding pictures.



**ANTHOGYR SA**

8, um Miercherbiërg P.B 184,  
L-7526 Mersch - Luxembourg

[www.anthogyr.com](http://www.anthogyr.com)

 **Anthogyr**  
A Straumann Group Brand